

River Tone, Parrett and Yeo

Phosphorus Reduction Scheme

Open year round for applications, enquiries and free advice visits.
Round 1 application deadline is 20 May.

Funding is available to farmers and land managers in parts of the River Tone, Parrett and Yeo catchments for adopting practices that reduce phosphorus and soil losses from agriculture.

This includes:

- Cross-slope hedgerow creation
- Tree planting alongside watercourses
- Leaky woody dams
- Wetland features including creation or restoration of ponds, swales, in-field bunds, in-ditch features, sediment traps and constructed wetlands



Pond creation



Sediment trap



Tree planting alongside watercourses

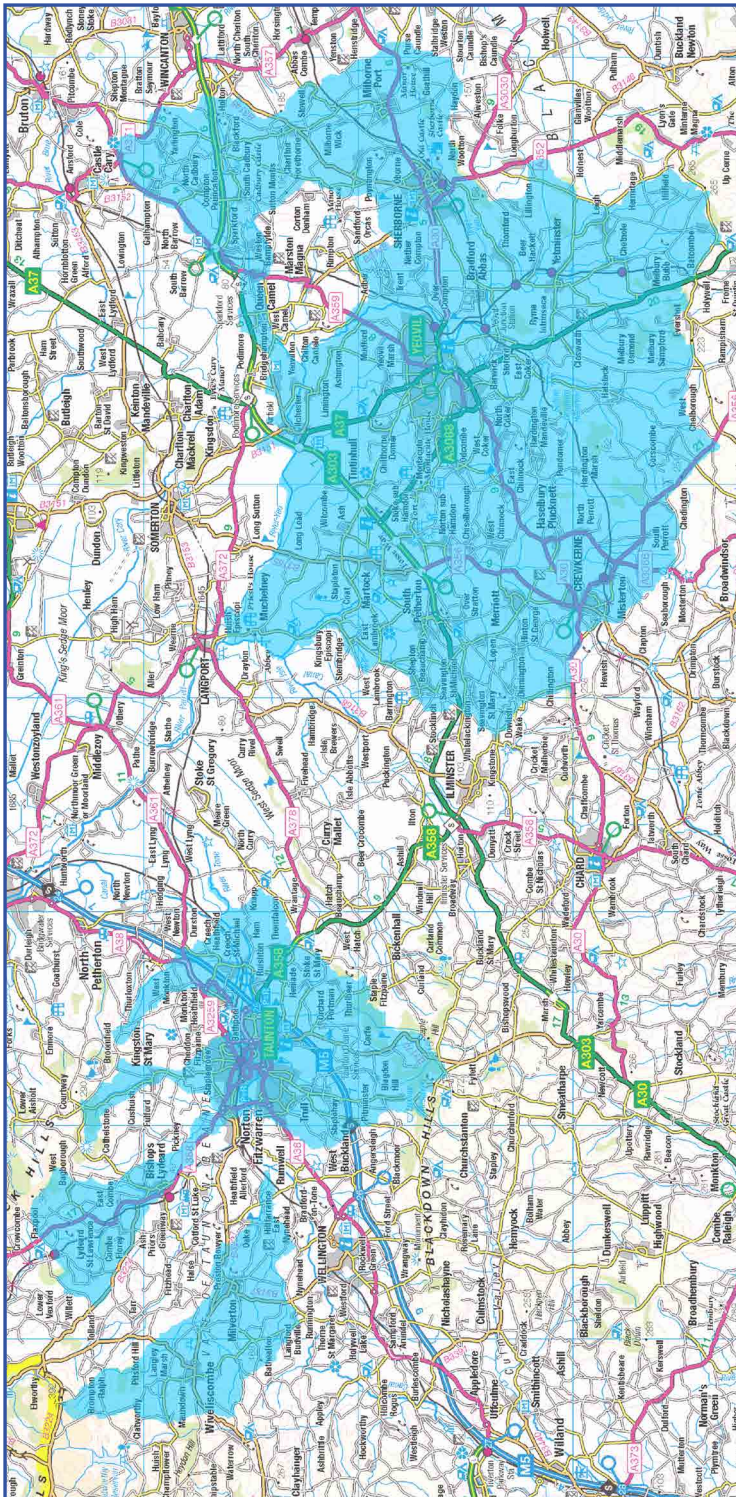
Find
out
more

For more information including a full list of grant funding options, zoomable maps of eligible areas, terms, conditions, payment rates and how to apply: wessexwater.co.uk/somerset-phosphorus or email: somersetphos@wessexwater.co.uk



Wessex Water
YTL GROUP

FOR YOU. FOR LIFE.



Target area (for zoomable maps of eligible areas visit wessexwater.co.uk/somerset-phosphorus)

This map may be used for Wessex Water Projects only.
Contains Ordnance Survey data © Crown Copyright and database right 2015; Soils Data © Cranfield University (NSRI) and for the Controller of HMSO [2022]