

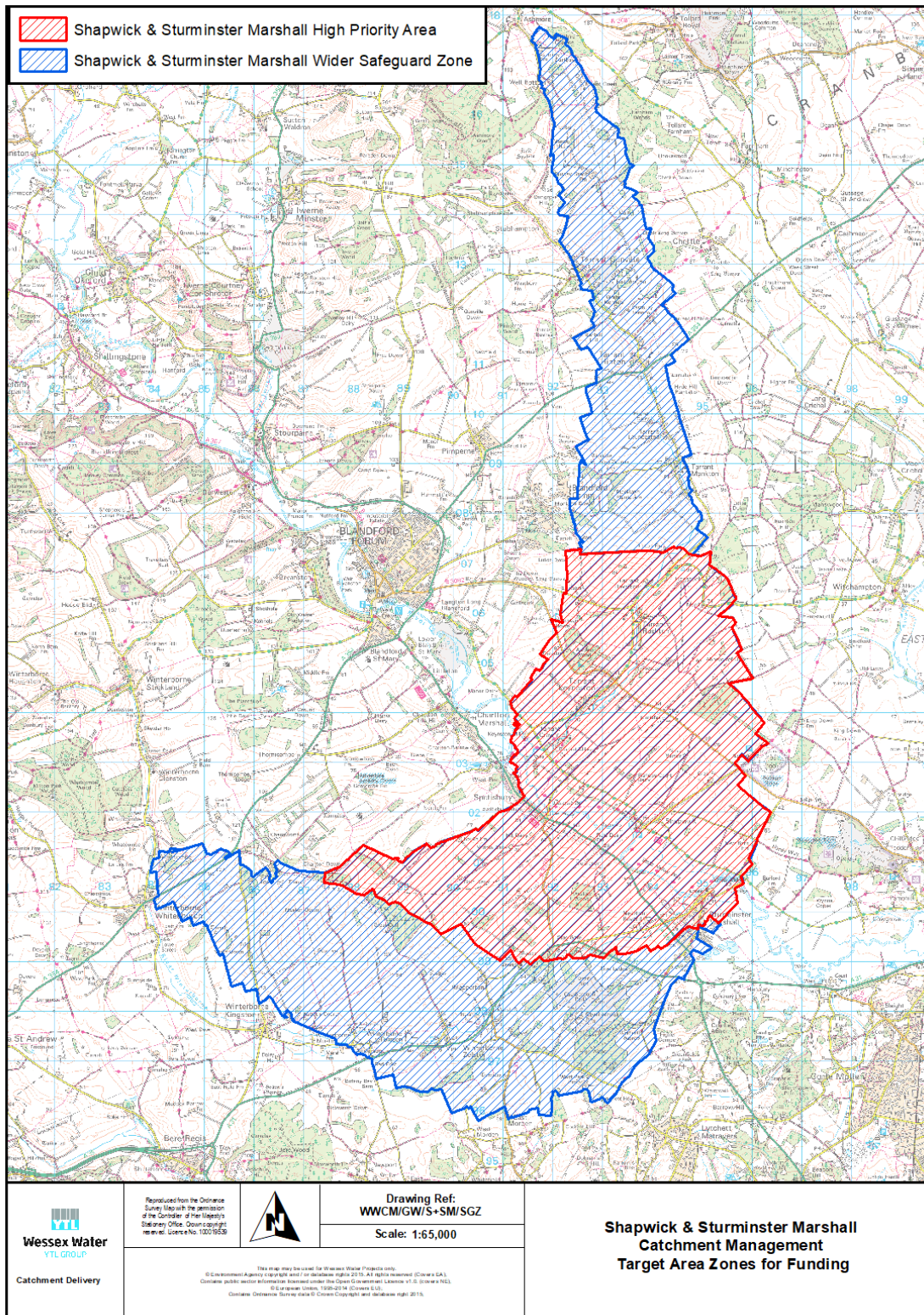
## Shapwick & Sturminster Marshall Measures Summary

Measure	Length of Scheme	Key Requirements	Payment Rate £/ha	Area cap	Application Process
<b>Overwinter Cover Crops</b>	6 months	<p>After Combinable Crops: Establish cover crop by 15<sup>th</sup> September. Destroy cover crop from 15<sup>th</sup> January.</p> <p>After Maize: Establish cover crop by 15<sup>th</sup> October Destroy cover crop from 1<sup>st</sup> March.</p> <p>Grazing permitted from date of destruction. Can sow multi species mix or a straight species. Legumes do not exceed 20% of mix</p>	<p>One off payment rate applies to the whole Safeguard Zone</p> <p><u>After Combinable Crops</u> <b>£150/ha</b> for cover crops established in <b>August*</b> <b>£100/ha</b> for cover crops drilled in <b>September*</b></p> <p><u>After Maize</u> <b>£150/ha</b> for cover crops established in <b>September*</b> <b>£100/ha</b> for cover crops drilled in <b>October*</b></p> <p>*£25/ha bonus if &gt;80% ground cover achieved by December 2024</p>	100ha per farm business	Online form <a href="#">Wessex Water Cover Crop - S&amp;SM (arcgis.com)</a>
<b>Undersowing Maize with Grass</b>	6-8 months	<p>Interrow drill grass into maize Establish by 10<sup>th</sup> July Destroy from the 1<sup>st</sup> March. Must be destroyed by 31<sup>st</sup> May at the latest</p>	<p>One off payment rate applies to the whole Safeguard Zone</p> <p><b>£200/ha</b> where &gt;80% ground cover achieved by December <b>£150/ha</b> if &lt;80% ground cover achieved by December</p>	100ha per farm business	Online form <a href="#">Wessex Water Cover Crop - S&amp;SM (arcgis.com)</a>
<b>Arable reversion to zero input grass</b>	5 years	<p>May be used on whole or part fields. Autumn Establishment. Hay Meadow mix. Hay cuts permitted. No livestock grazing. Zero Nitrogen inputs. Returning to Arable production: Spring destruction</p>	<p>Annual payment rate. Tiered payment rate based on field location</p> <p>High priority area <b>£720/ha/year</b> Wider Safeguard Zone: <b>£500/ha/year</b></p>	20ha per farm business	Expression of interest
<b>Arable reversion to low - medium input grass</b>	5 Years	<p>Autumn Establishment. Hay Meadow mix, may include one agricultural grass. Hay cuts permitted. No livestock grazing. Returning to Arable production: Spring destruction Nitrogen inputs up to 100kgN/ha total from fertiliser and/or organic manures</p>	<p>Annual payment rate. Tiered payment rate based on field location</p> <p>High priority area <b>£600/ha/year</b> Wider Safeguard Zone: <b>£400/ha/year</b></p>	20ha per farm business	Expression of interest

<b>Arable conversion to Herbal Leys</b>	2-4 years	<p>Applies to land currently in arable production. Autumn or spring establishment of a herbal ley. Light summer grazing and/ or cut for hay/silage is permitted.</p> <p>Use of organic manures is permitted at capped rates.</p> <p>Do not apply artificial nitrogen fertiliser.</p> <p>Returning to arable – spring destruction and follow with a spring crop.</p>	<p>Annual payment rate. Tiered payment rate based on field location</p> <p>High priority area <b>£600/ha/year</b></p> <p>Wider Safeguard Zone <b>£350/ha/year</b></p>	20ha per farm business	Expression of interest
<b>Summer Fallow</b>	2 - 6 months	<p>This option may be used after an over winter cover crop or after a failed winter crop.</p> <p>Establish a fallow crop over the summer as an alternative break crop – this may include, phacelia, linseed, sunflowers, legumes may be used but must not exceed 20% of the mix.</p> <p>Establish by 15<sup>th</sup> May.</p> <p>Destruction from 1<sup>st</sup> August.</p> <p>Summer fallow must be followed with an overwinter cover crop -this is funded under a separate scheme – such as SFI or Wessex Water</p> <p>The cover crop must be followed by a spring cash crop.</p>	<p>One off payment for the duration of the scheme.</p> <p>Tiered payment based on field location</p> <p>High priority area <b>£650/ha</b></p> <p>Wider Safeguard Zone <b>£550/ha</b></p>	20ha per farm business	Expression of interest
<b>Continuous Spring Cereal Cropping</b>	3-5 years	<p>Grow a continuous spring crop on the field in the agreement.</p> <p>A cover crop must precede the spring crop – this can either be funded by WW or another scheme</p> <p>Reduce fertiliser inputs by 25 – 30kgN/ha following the cover crop.</p>	<p>Annual payment rate. Tiered payment rate based on field location</p> <p>High priority area <b>£250/ha/year</b></p> <p>Wider catchment <b>£200/ha/year</b></p>	30ha per farm business	Expression of interest
<b>Conversion from high input grass to low input grass</b>	Min 2 years – up to 5 years subject to agreement with farmer	<p>Cap of 50kgN/ha total through organic and/or organic manures</p> <p>Applies to established grassland that is currently receiving over 200kgN/ha.</p>	<p>Annual payment rate. Tiered payment rate based on field location</p> <p>High priority area <b>£250/ha/year</b></p> <p>Wider catchment <b>£150/ha/year</b></p>	20ha per farm business	Expression of interest

**Additional Support:** If you are interested in nutrient management planning, farm infrastructure improvements and soil management, please get in contact with us and we can help facilitate support.

## Catchment Map



Priority areas have been defined by the Source Protection Zones (SPZs) and follow field boundaries. The High priority area is defined by SPZ 1&2.

## Eligibility

- Fields within the Shapwick & Sturminster Marshall Safeguard zone only
- Double funding with other schemes such as Sustainable Farming Incentive and Countryside Stewardship is not permitted

## Application process

- Please fill out the expression of interest form, stating an approximate area of land you wish to enter into the scheme.
- Upon submitting the expression of interest form, your catchment adviser will be in contact with you to discuss the scheme further.
- Once the schemes and areas are agreed a formal contract will be drawn up between the farmer and Wessex Water.
- In the event of high demand for funding for certain types of measures, further limits may be placed on the amount of funding awarded per farm and funding may be awarded on a first-come-first-served basis.
- Please note that the Shapwick & Sturminster Marshall Enhanced Catchment Management Scheme has a fixed annual budget and Wessex Water reserves the right to decline applications.

## Record keeping, validation and data collection

- In entering the scheme, you are agreeing to allow a Wessex Water catchment adviser to visit land in a scheme for visual inspection before, during and after the implementation of the scheme.
- In entering the scheme a Wessex Water catchment adviser may request farm records from you demonstrating fertiliser rates, the change in cropping, stocking rates etc.
- In entering the scheme Wessex Water may carry out soil sampling, porous pots, grain samples and crop tissue samples for nutrient analysis. Any data collected will be shared with the farmer. Wessex Water will store data on an internal Wessex Water database and may be used to contribute to a larger aggregated and anonymised data set.

## Payment terms

- Payment will be made annually.
- To claim payment for the scheme your Wessex Water catchment adviser will request you to send an invoice to be sent directly to them.
- Wessex Water payment terms are end of the month plus 30 days
- The invoice should be submitted between the 1<sup>st</sup> – 31<sup>st</sup> January to guarantee payment by 31<sup>st</sup> March.
- You may be required by the Wessex Water payments team to be registered as “suppliers” to Wessex Water Services Limited, please ensure paperwork is filled out and returned.

## Expression of Interest Form

If you wish to enter a listed scheme, please complete the expression of interest form below. Submission of an expression of interest form is not confirmation of funding. Upon submitting this expression of interest, it will be reviewed by the catchment adviser, who will be in contact with you to discuss the measure further and draw up an agreement.

Please return completed application forms to [catchment.management@wessexwater.co.uk](mailto:catchment.management@wessexwater.co.uk) or post to; *The Catchment Delivery Team, Wessex Water, The Admiralty, Corfe Mullen, Dorset, BH21 3RQ*

### 1. Farm & business details

<b>Farmer Name:</b>	
<b>Farm Business Name:</b>	
<b>Business Address:</b>	
<b>Postcode:</b>	
<b>Contact Number:</b>	
<b>Email Address:</b>	
<b>SBI Number:</b>	

### 2. Options applied for

Please select which option/s you are interested in with an approximate area

<b>Scheme</b>	<b>Please tick which schemes you are interested in</b>	<b>Approximate area (ha)</b>
Arable reversion to no input grass		
Arable reversion to low-medium input grass		
Arable conversion to Herbal Leys		
Summer Fallow		
Continuous Spring Cereal Cropping		
Conversion from high input grass to low input grass		

Once your expression of interest form has been submitted it will be reviewed by a catchment adviser, who will discuss the option/s further with you and request a map with field locations.

### 3. Other grant funding

Are any of the fields you are applying for in any other environmental schemes?

<input type="checkbox"/>	Yes
<input type="checkbox"/>	No

If yes, please provide more details eg: Scheme name

### 4. Declaration

I understand in submitting this form that this is not confirmation of funding, it will be assessed by a Wessex Water catchment adviser, and if successful a formal agreement will be sent with the terms and conditions.

I understand that if successful, I agree to allow the following:

- Allow a Wessex Water catchment adviser to visit land in a scheme for visual inspection before, during and after the implementation of the scheme.
- Share records that may be requested by Wessex Water.
- Where necessary allow Wessex Water to carry out soil sampling, porous pots, grain samples and crop tissue samples. Any data collected will be shared with the farmer. Wessex Water will store data on an internal Wessex Water database and may be used to contribute to a larger aggregated and anonymised data set.

Sign .....

Print Name .....

Date .....